



LOW EMBODIED CARBON | CARBON NEUTRAL | CLOSED LOOP RECYCLING



Floor Architecture III

ShawContract®

Our Floor Architecture collections have always replicated the forms of natural stone, polished concrete, pebbles and small rocks.

Floor Architecture III is now available in **three styles**, Stone and Fragment are joined by Formation, a more structured geometric pattern.

All styles are available in **three colour groups**. Saturated, Pastel and Subtle Colour Accent. The result of a six month colour exploration, these new colours create a fresh and sophisticated modern palette. 27 options; 18 new colours and 9 neutrals.

Available in all **three backings**: EcoWorx S, TaskWorx and ComfortWorx.

three styles, three colour groups, three backings



COVER **FORMATION COLOURS SAGE** INSTALLED IN BRICK



3

3 Styles: Stone, Fragment and Formation

3 Colour groups:

Saturated: Intensity of shade without being bright

Pastel: Soft and delicate shades of colour

Subtle Colour Accent: Functional use of colour, without being bold

3 Backing Options: EcoWorx S, TaskWorx, ComfortWorx



Oatmeal 04111

Brushed Gold 04210

Midnight Brushed Gold 04211

Copper 04865

Apricot 04675

Midnight Apricot 04674

Rosewood 04870

Powder Pink 04800

Midnight Powder Pink 04801

Steel Blue 04447

Mineral 04327

Midnight Mineral 04328

Denim 04486

Sky 04411

Midnight Sky 04412

Racing Green 04334

Sage 04375

Midnight Sage 04376

Colour Combinations

The beauty of FAIII is that every colourway in the collection has a certain level of contrast and balance. Offering endless options in which you can combine different strengths of colour.

Saturated

Pastel

Subtle Colour Accent

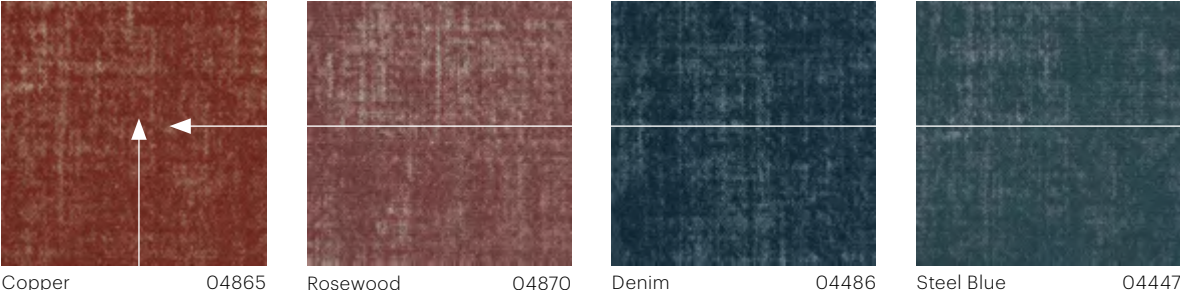


Colour Palette

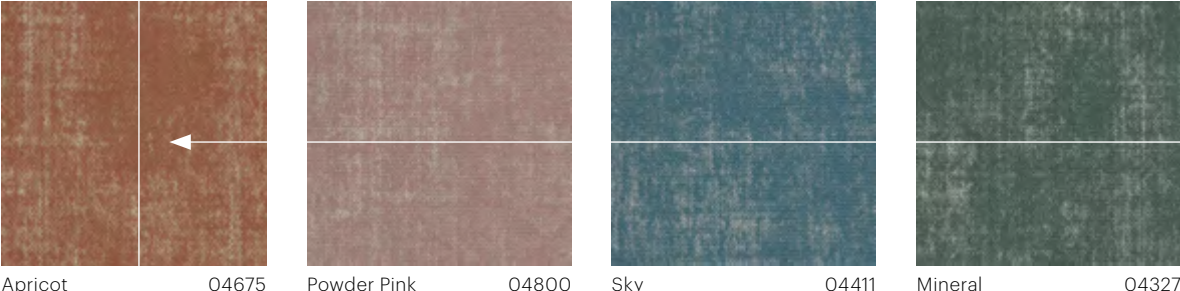
Each horizontal line represents a colour type: Top: Saturated, Middle: Pastel, Bottom: Subtle Colour Accent.

Colours also work in columns of colours in tones. The grey with Subtle Accent Colour is informed from the Pastel colour above, this applies to each colour column. Each group has balance and depth of shade that means colours can be combined without any conflict.

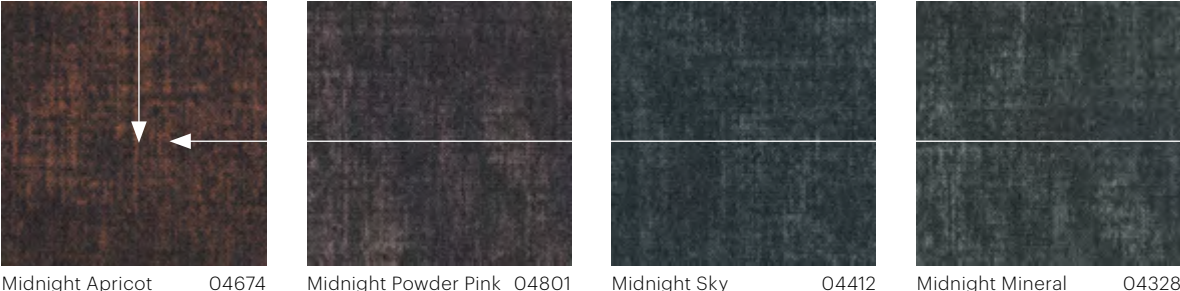
Saturated:



Pastel:



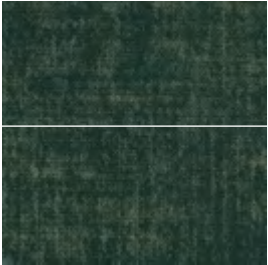
Subtle Colour Accent:



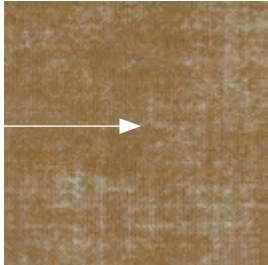
Work with a group of Saturated Colours and you can create an earthy, grounded feel. Use Pastels to create a gentle and considered palette, or for less colour requirements – use the Midnight (grey) Subtle Accent Colour line to incorporate colour without making a bold statement.

Colours

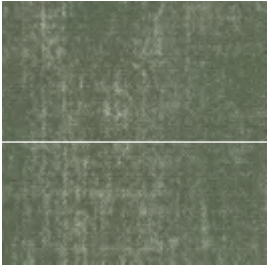
Neutrals



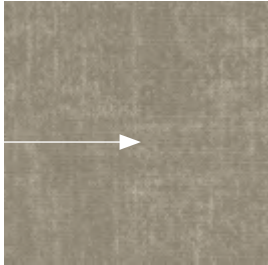
Racing Green 04334



Brushed Gold 04210



Sage 04375



Oatmeal 04111



Midnight Sage 04376



Midnight Brushed Gold 04211



Mica 53518



Mortar 53530



Mix 53597



Marble 53100



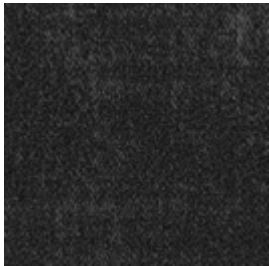
Limestone 53535



Chromite 53580



Anthracite 53555



Granite 53500



Azurite 53485



FRAGMENT COLOURS

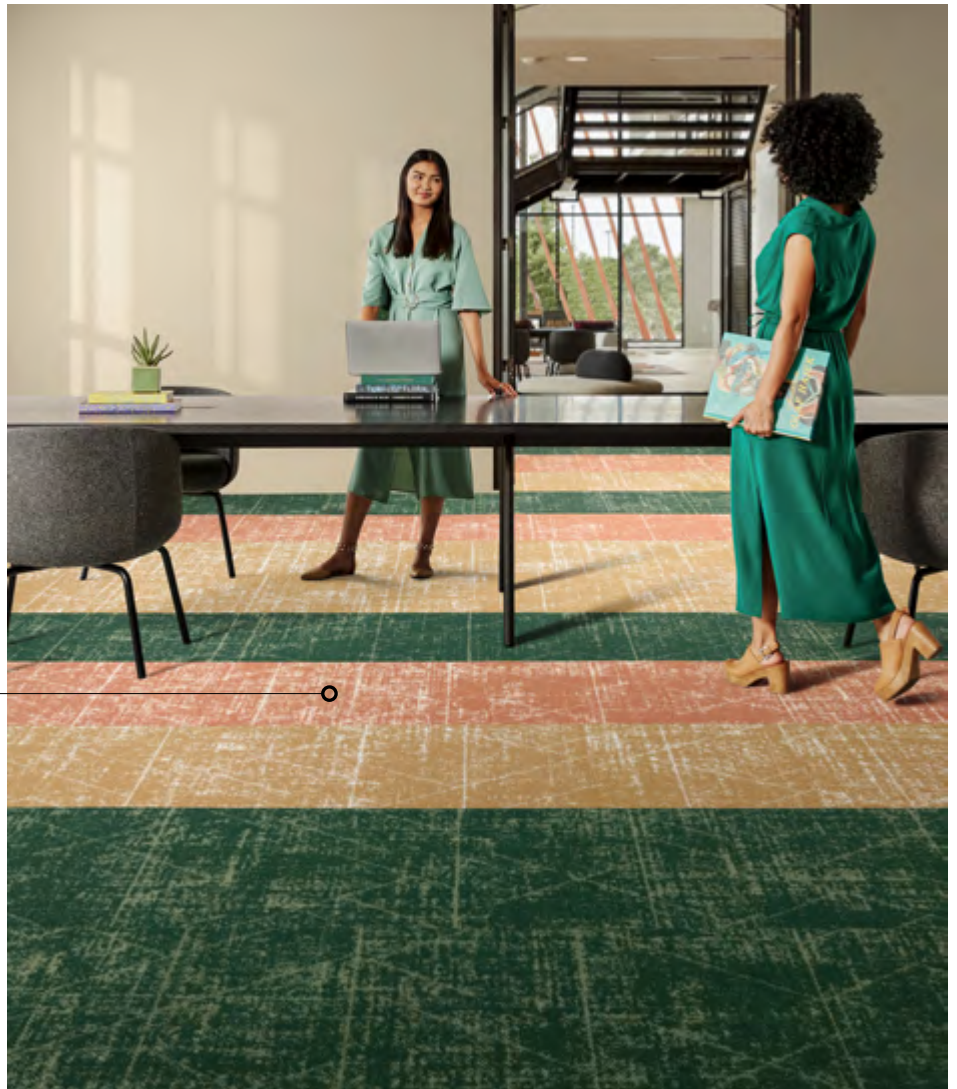
- COMBINING RACING GREEN, BRUSHED GOLD & APRICOT INSTALLED IN MONOLITHIC

Saturated Palette

Displaying how you can combine Saturated tones and a pastel tone to create a balanced interior scheme.



Saturated palette – Earthy, grounded. Offers reassurance & stability. Luxurious and timeless quality.



FORMATION COLOURS ● COMBINING RACING GREEN, BRUSHED GOLD & APRICOT INSTALLED IN BRICK



Pastel Palette

Displaying how you can combine three different pastel tones to create a balanced interior scheme.



Pastel palette – Gentle, considered. Informed by nature with an optimistic and refreshing tone. Serene vibes.

FRAGMENT COLOURS ● COMBINING MINERAL, OATMEAL AND POWDER PINK INSTALLED IN MONOLITHIC



FORMATION COLOURS ● COMBINING MINERAL, OATMEAL & POWDER PINK INSTALLED IN BRICK



FORMATION COLOURS ● SAGE AND MIDNIGHT SAGE INSTALLED IN BRICK

Subtle Colour Accent Palette

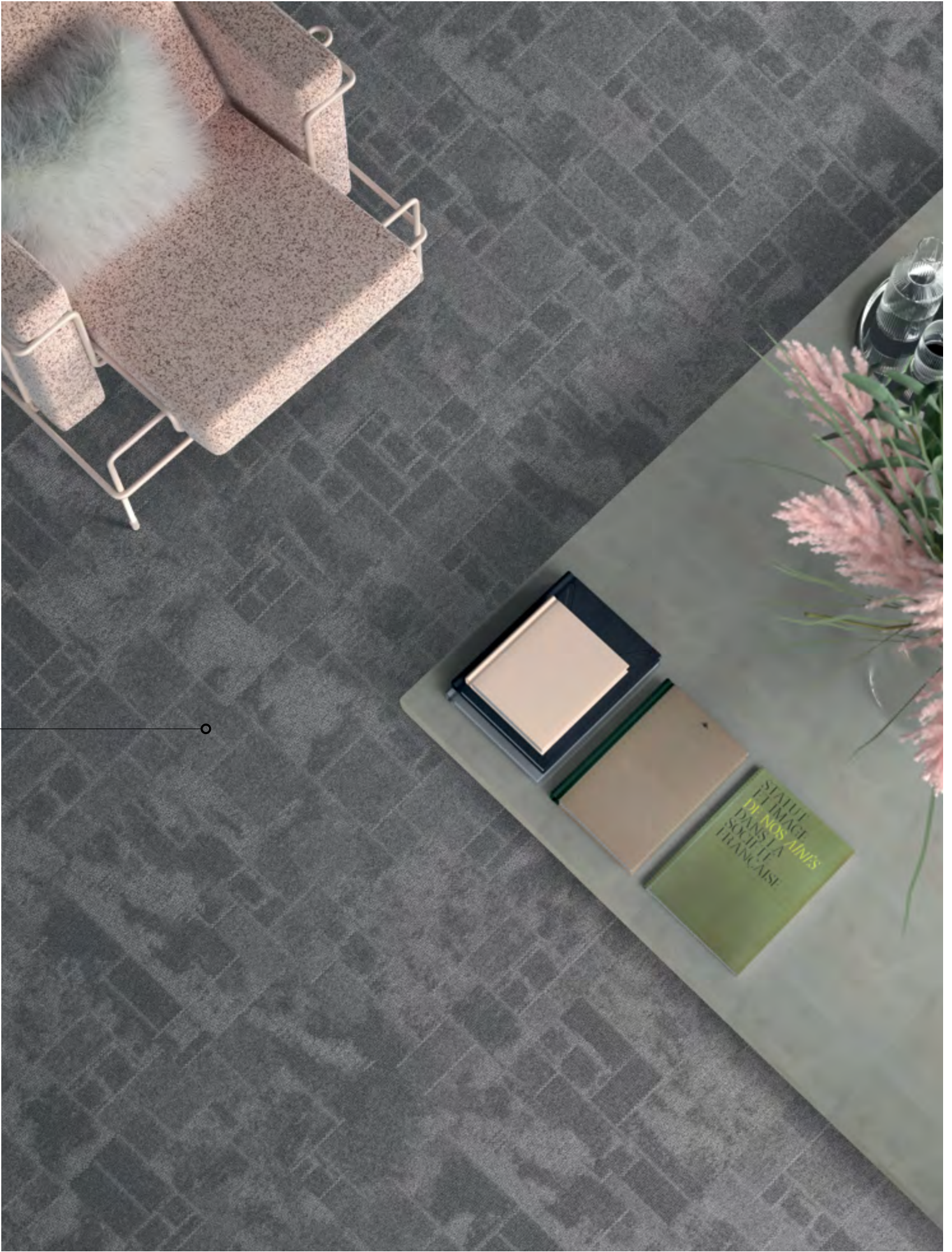
Displaying how you can combine subtle accents with a few pastel and a saturated tones to create a 'hint of colour' for an interior scheme.



Subtle Colour Accent palette – Layered and reliable. Restrained tones with hints of subtle accents.



FORMATION COLOURS ● MIDNIGHT SAGE INSTALLED IN BRICK



STONE ● CHROMITE INSTALLED IN MONOLITHIC

The existing 9 neutrals from Floor Architecture II are now available in all 3 styles; Stone, Fragment & Formation. These 9 neutrals to make up part of the total 27 colours available in FAIII. The original neutrals remain the foundation of this collection.

LRV & L*: Light Reflectance Values

Light Reflectance Values and L*

LRV is a measurement that indicates how much light a surface reflects and how much it absorbs.

Understanding the Light Reflectance Values of surfaces enables interior lighting levels to be optimised and colours to be contrasted.

Designers can use the L* value for determining lighting levels or the LRV (Y) value to compare the carpet tile colours to edgings and other surface finishes.

Other style LRV's can be found on the shaw contract website.

	Colour name	Colour number	LRV	L*
Fragment colours Colours available	oatmeal	04111	27.0	58.98
	brushed gold	04210	22.4	54.44
	midnight brushed gold	04211	6.9	31.52
	mineral	04327	17.9	49.42
	midnight mineral	04328	8.3	34.63
	racing green	04334	5.3	27.67
	sage	04375	19.3	51.02
	midnight sage	04376	6.4	30.37
	sky	04411	18.8	50.5
	midnight sky	04412	6.8	31.43
	steel blue	04447	12.3	41.66
	denim	04486	5.2	27.29
	midnight apricot	04674	7.0	31.79
	apricot	04675	18.4	50.03
	powder pink	04800	24.1	56.17
	midnight powder pink	04801	8.4	34.83
	copper	04865	12.1	41.43
	rosewood	04870	13.4	43.39
	Fragment Colours available	marble	53100	25.9
azurite		53485	3.1	20.53
granite		53500	3.3	21.30
mica		53518	10.2	38.26
mortar		53530	11.5	40.44
limestone		53535	13.2	43.01
anthracite		53555	5.8	28.94
chromite		53580	10.3	38.38
mix		53597	7.0	31.88



Saturated palette

Earthy grounded. Offers reassurance & stability. Luxurious and timeless quality.

- ① **Dye Lab** Fustic Wood 41315
- ② **Belong** Hearten 48515
- ③ **Fragment Colours** Brushed Gold 04210
- ④ **Nordic** Golden 77756
- ⑤ **Textile** Saffron 79210
- ⑥ **Endless** Forests 05334
- ⑦ **Belong** Golden 48211
- ⑧ **Fragment Colours** Apricot 04675
- ⑨ **Fragment Colours** Racing Green 04334
- ⑩ **Together** Hearten Golden 48211
- ⑪ **Formation Colours** Midnight Apricot 04674



Pastel palette

Gentle, considered. Informed by nature with an optimistic and refreshing tone. Serene vibes.

- 1 **Belong** Rosewood 48870
- 2 **Dye Lab** Black Walnut 41402
- 3 **Fragment** Marble 53100
- 4 **Nordic** Fir 77155
- 5 **Fragment Colours** Powder Pink 04800
- 6 **Fragment Colours** Steel Blue 04447
- 7 **Familiar** Rosewood 35870
- 8 **Formation Colours** Midnight Powder Pink 04801
- 9 **Fragment Colours** Mineral 04327
- 10 **Nordic** Honey 77103
- 11 **Observe** Optimistic 05105
- 12 **Belong** Greige 48516
- 13 **Fragment Colours** Oatmeal 04111



- ❶ **Formation Colours** Midnight Apricot 04674
- ❷ **Dye lab** Iron 41580
- ❸ **Identity** Mint 35327
- ❹ **Fragment Colours** Midnight Mineral 04328
- ❺ **Nordic Fir** 77155
- ❻ **Formation Colours** Mineral 04327
- ❼ **Formation Colours** Apricot 04675
- ❽ **Fragment Colours** Steel Blue 04447
- ❾ **Dye lab** Saxon 41462
- ❿ **Honest** Overdye 35496
- ⓫ **Fragment Colours** Denim 04486
- ⓬ **Formation Colours** Midnight Sky 04412
- ⓭ **Formation Colours** Sky 04412

Subtle Colour Accent palette

Layered and reliable.
Restrained tones with hints
of subtle accents.

3 Backing Options

EcoWorx S™

– high performance polyolefin plastomer backing

100%

close loop recyclable backing solution

EcoSolution Q100™

100%

recycled content nylon fibre, optimised for low carbon and carbon neutral

Embodied Carbon (EPD Calculation A1-A3)

4.91 kg CO₂ e/m²

EcoWorx S carpet tile weighs

50%

less than bitumen-backed carpet tile

TaskWorx

– High performance polymer modified bitumen backing

100%

Utilising waste raw material & 100% recycled content filler

EcoSolution Q100™

100%

recycled content nylon fibre, optimised for low carbon and carbon neutral

Embodied Carbon (EPD Calculation A1-A3)

3.58 kg CO₂ e/m²

TaskWorx carpet tile is Air Comfort Gold certified for low emitting products

ComfortWorx

– High performance acoustic and underfoot comfort carpet tile backing

90%

Matrix pad Matrix pad made from 90% recycled PET bottles. 67 bottles are using in every m²

EcoSolution Q100™

100%

recycled content nylon fibre, optimised for low carbon and carbon neutral

Embodied Carbon (EPD Calculation A1-A3)

5.10 kg CO₂ e/m²

ComfortWorx carpet tile delivers

65%

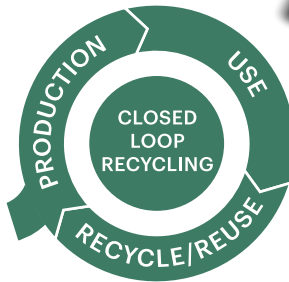
Improvement in sound absorption performance compared to other hard backed carpet tiles or hard surfaces



1.

EcoWorx S
carpet tile

**Closing
the loop**



re[TURN][®]

3.

Re-extruded
EcoWorx S
pellets

2.

Process in
progress

Floor Architecture III

3

Styles

Stone
Fragment
Formation

3

Colour Groups

Saturated
Pastel
Subtle Colour Accents

3

Backing Options

TaskWorx
EcoWorx S
ComfortWorx

27

Options

18

New colours

9

Neutrals

Stone

	TaskWorx	Ecworx S	Comfortworx
Style number:	5T454	5T580	CO18W
Collection:	Floor Architecture III	Floor Architecture III	Floor Architecture III
Product type:	Carpet tile	Carpet tile	Carpet tile

Construction

Data + Performance

Type of manufacture	Tufted 1/10" 39.4 per 10 cm	Tufted 1/10" 39.4 per 10cm	Tufted 1/10" 39.4 per 10 cm
Aspect	Multi-level pattern loop	Multi-level pattern loop	Multi-level pattern loop
Dye method	100% solution dyed	100% solution dyed	100% solution dyed
Dimensions	50 x 50 cm 20 tiles (5 m²) per box	50 x 50 cm 20 tiles (5 m²) per box	50 x 50 cm 16 tiles (4 m²) per box
Primary backing	PET non-woven	PET non-woven	PET non-woven
Secondary backing	Taskworx® Tile 100% recycled calcium carbonate filler	Ecworx S™ Polyolefin Plastomer	ComfortWorx® Tile Matrix Pad Layer Contains 90% Recycled Content
Pile fibre composition	Eco Solution Q100 Polyamide 6 Contains 100% Recycled Content	Eco Solution Q100™ Polyamide 6 Contains 100% Recycled Content	Eco Solution Q100 Polyamide 6 Contains 100% Recycled Content
Total thickness	6.7 mm	6.0 mm	11.5 mm
Effective Pile thickness	3.3 mm	1.9 mm	3.0 mm
Total mass	3980 g/m²	2380 g/m²	4240 g/m²
Nominal total pile mass	630 g/m²	630 g/m²	630 g/m²
Effective pile mass	354 g/m²	238 g/m²	323 g/m²
Pile density	0.108 g/cm³	0.123 g/cm³	0.107 g/cm³
Embodied Carbon (EPD Calculation A1-A3)	3.58 kg CO ₂ e/m²	4.91 kg CO ₂ e/m²	5.10 kg CO ₂ e/m²
Recommended installation methods	Monolithic, Quarter turn, Ashlar, Brick, Random	Monolithic, Quarter turn, Ashlar, Brick, Random	Monolithic, Quarter turn, Ashlar, Brick, Random



Carbon Neutral
Low Embodied Carbon



For detailed warranty information and the most accurate information on the recycle content please visit shawcontract.com

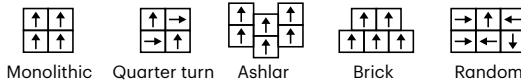
Pour plus de détails sur les garanties et plus d'information sur le contenu recyclé rendez-vous sur shawcontract.com

Voor meer informatie over de garantie en voor de meest recente informatie over recycling, ga naar shawcontract.com

Detaillierte Informationen über Gewährleistungen und den genauen Recyclinganteil finden Sie unter shawcontract.com

Recommended installation methods

Méthodes d'installation conseillées | Advies tapijttegels leggen | Empfohlene Installationsmethoden



EcoWorx S	26db	0.20 aw
TaskWorx	26db	0.15 aw
ComfortWorx	37db	0.30 aw

<p>22 EU.DOP/2895/CPR/1222/0323/EST</p> <p>Oosterhout Showroom Vaartweg 10, 4905 BL Netherlands (NLD)</p> <p>Notified Body 2895</p>	<p>22 UK.DOP/0338/CPR/1222/0323/EST</p> <p>Blackaddie Road Industrial Estate, Sanquhar, DG4 6DB, UK</p> <p>Approved Body 0338</p>
<p>EN 14041:2004/AC 2006</p> <p>For use as an indoor floor covering as specified by the manufacturer</p>	

London +44 (0) 20 7961 4120 | Paris +33 (0) 1 81 22 44 39 | Dubai +971 4 584 6956 | Oosterhout +31 20 2620955

Specifications are subject to nominal manufacturing variances. Material supply and/or manufacturing processes may necessitate specification changes without notice. Visit shawcontract.com for more information.

L'approvisionnement des matériaux et/ou les procédés de fabrication peuvent nécessiter des modifications de caractéristiques sans avertissement. Pour plus d'informations, veuillez vous rendre sur shawcontract.com

Specificaties voor de levering van materialen en/of productieprocessen kunnen indien nodig zonder voorafgaande kennisgeving worden gewijzigd. Ga naar shawcontract.com voor meer informatie.

Die Spezifikationen unterliegen den nominalen Fertigungsschwankungen. Materialversorgungs- und/oder Fertigungsprozesse können ohne Vorankündigung zu Spezifikationsänderungen führen. Weitere Informationen finden Sie unter shawcontract.com

Stone Colours

	TaskWorx	Ecoworx S	Comfortworx
Style number:	5T586	5T587	C040W
Collection:	Floor Architecture III	Floor Architecture III	Floor Architecture III
Product type:	Carpet tile	Carpet tile	Carpet tile

Construction

Data + Performance

Type of manufacture	Tufted 1/10" 39.4 per 10 cm	Tufted 1/10" 39.4 per 10 cm	Tufted 1/10" 39.4 per 10 cm
Aspect	Multi-level pattern loop	Multi-level pattern loop	Multi-level pattern loop
Dye method	100% solution dyed	100% solution dyed	100% solution dyed
Dimensions	50 x 50 cm 20 tiles (5 m ²) per box	50 x 50 cm 20 tiles (5 m ²) per box	50 x 50 cm 16 tiles (4 m ²) per box
Primary backing	PET non-woven	PET non-woven	PET non-woven
Secondary backing	Taskworx® Tile 100% recycled calcium carbonate filler	Ecoworx S™ Polyolefin Plastomer	ComfortWorx® Tile Matrix Pad Layer Contains 90% Recycled Content
Pile fibre composition	Eco Solution Q100 Polyamide 6 Contains 100% Recycled Content	Eco Solution Q100™ Polyamide 6 Contains 100% Recycled Content	Eco Solution Q100 Polyamide 6 Contains 100% Recycled Content
Total thickness	6.8 mm	6.1mm	11.1mm
Effective Pile thickness	2.7 mm	2.8mm	2.8mm
Total mass	3825 g/m ²	2478 g/m ²	4069 g/m ²
Nominal total pile mass	630 g/m ²	630 g/m ²	630 g/m ²
Effective pile mass	297 g/m ²	308 g/m ²	308 g/m ²
Pile density	0.108 g/cm ³	0.111 g/cm ³	0.109 g/cm ³
Embodied Carbon (EPD Calculation A1-A3)	3.58 kg CO ₂ e/m ²	4.91 kg CO ₂ e/m ²	5.10 kg CO ₂ e/m ²
Recommended installation methods	Monolithic, Quarter turn, Ashlar, Brick, Random	Monolithic, Quarter turn, Ashlar, Brick, Random	Monolithic, Quarter turn, Ashlar, Brick, Random



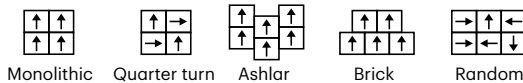
Carbon Neutral
Low Embodied Carbon



For detailed warranty information and the most accurate information on the recycle content please visit shawcontract.com
 Pour plus de détails sur les garanties et plus d'information sur le contenu recyclé rendez-vous sur shawcontract.com
 Voor meer informatie over de garantie en voor de meest recente informatie over recycling, ga naar shawcontract.com
 Detaillierte Informationen über Gewährleistungen und den genauen Recyclinganteil finden Sie unter shawcontract.com

Recommended installation methods

Méthodes d'installation conseillées | Advies tapijttegels leggen | Empfohlene Installationsmethoden



EcoWorx S	26db	0.20 aw
TaskWorx	26db	0.15 aw
ComfortWorx	37db	0.30 aw

<p>22 EU.DOP/2895/CPR/1222/0323/EST</p> <p>Oosterhout Showroom Vaartweg 10, 4905 BL Netherlands (NLD)</p> <p>Notified Body 2895</p>	<p>22 UK.DOP/0338/CPR/1222/0323/EST</p> <p>Blackkaddie Road Industrial Estate, Sanquhar, DG4 6DB, UK</p> <p>Approved Body 0338</p>
<p>EN 14041:2004/AC 2006</p> <p>For use as an indoor floor covering as specified by the manufacturer</p>	

London +44 (0) 20 7961 4120 | Paris +33 (0)1 81 22 44 39 | Dubai +971 4 584 6956 | Oosterhout +31 20 2620955

Specifications are subject to nominal manufacturing variances. Material supply and/or manufacturing processes may necessitate specification changes without notice. Visit shawcontract.com for more information.

L'approvisionnement des matériaux et/ou les procédés de fabrication peuvent nécessiter des modifications de caractéristiques sans avertissement. Pour plus d'informations, veuillez vous rendre sur shawcontract.com

Specificaties voor de levering van materialen en/of productieprocessen kunnen indien nodig zonder voorafgaande kennisgeving worden gewijzigd. Ga naar shawcontract.com voor meer informatie.

Die Spezifikationen unterliegen den nominalen Fertigungsschwankungen. Materialversorgungs- und/oder Fertigungsprozesse können ohne Vorankündigung zu Spezifikationsänderungen führen. Weitere Informationen finden Sie unter shawcontract.com

Fragment

	TaskWorx	Ecoworx S	Comfortworx
Style number:	5T453	5T579	CO19W
Collection:	Floor Architecture III	Floor Architecture III	Floor Architecture III
Product type:	Carpet tile	Carpet tile	Carpet tile

Construction

Data + Performance

Type of manufacture	Tufted 1/12" 47.2 per 10 cm	Tufted 1/12" 47.2 per 10cm	Tufted 1/12" 47.2 per 10 cm
Aspect	Multi-level pattern loop	Multi-level pattern loop	Multi-level pattern loop
Dye method	100% solution dyed	100% solution dyed	100% solution dyed
Dimensions	50 x 50 cm 20 tiles (5 m ²) per box	50 x 50 cm 20 tiles (5 m ²) per box	50 x 50 cm 16 tiles (4 m ²) per box
Primary backing	PET non-woven	PET non-woven	PET non-woven
Secondary backing	Taskworx® Tile 100% recycled calcium carbonate filler	Ecoworx S™ Polyolefin Plastomer	ComfortWorx® Tile Matrix Pad Layer Contains 90% Recycled Content
Pile fibre composition	Eco Solution Q100 Polyamide 6 Contains 100% Recycled Content	Eco Solution Q100™ Polyamide 6 Contains 100% Recycled Content	Eco Solution Q100 Polyamide 6 Contains 100% Recycled Content
Total thickness	6.2 mm	5.6 mm	11.3 mm
Effective Pile thickness	2.7 mm	1.7 mm	2.9 mm
Total mass	3934 g/m ²	2287 g/m ²	4262 g/m ²
Nominal total pile mass	630 g/m ²	630 g/m ²	630 g/m ²
Effective pile mass	300 g/m ²	201 g/m ²	288 g/m ²
Pile density	0.120 g/cm ³	0.115 g/cm ³	0.097 g/cm ³
Embodied Carbon (EPD Calculation A1-A3)	3.58 kg CO ₂ e/m ²	4.91 kg CO ₂ e/m ²	5.10 kg CO ₂ e/m ²
Recommended installation methods	Monolithic, Quarter turn, Ashlar, Brick, Random	Monolithic, Quarter turn, Ashlar, Brick, Random	Monolithic, Quarter turn, Ashlar, Brick, Random



Carbon Neutral
Low Embodied Carbon

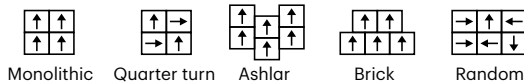


For detailed warranty information and the most accurate information on the recycle content please visit shawcontract.com

Pour plus de détails sur les garanties et plus d'information sur le contenu recyclé rendez-vous sur shawcontract.com
Voor meer informatie over de garantie en voor de meest recente informatie over recycling, ga naar shawcontract.com
Detaillierte Informationen über Gewährleistungen und den genauen Recyclinganteil finden Sie unter shawcontract.com

Recommended installation methods

Méthodes d'installation conseillées | Advies tapijttegels leggen | Empfohlene Installationsmethoden



EcoWorx S	26db	0.20 aw
TaskWorx	26db	0.15 aw
ComfortWorx	37db	0.30 aw

<p>22 EU.DOP/2895/CPR/1222/0323/EST</p> <p>Oosterhout Showroom Vaartweg 10, 4905 BL Netherlands (NLD)</p> <p>Notified Body 2895</p>	<p>22 UK.DOP/0338/CPR/1222/0323/EST</p> <p>Blackaddie Road Industrial Estate, Sanquhar, DG4 6DB, UK</p> <p>Approved Body 0338</p>
<p>EN 14041:2004/AC 2006</p> <p>For use as an indoor floor covering as specified by the manufacturer</p>	

London +44 (0) 20 7961 4120 | Paris +33 (0) 1 81 22 44 39 | Dubai +971 4 584 6956 | Oosterhout +31 20 2620955

Specifications are subject to nominal manufacturing variances. Material supply and/or manufacturing processes may necessitate specification changes without notice. Visit shawcontract.com for more information.

L'approvisionnement des matériaux et/ou les procédés de fabrication peuvent nécessiter des modifications de caractéristiques sans avertissement. Pour plus d'informations, veuillez vous rendre sur shawcontract.com

Specificaties voor de levering van materialen en/of productieprocessen kunnen indien nodig zonder voorafgaande kennisgeving worden gewijzigd. Ga naar shawcontract.com voor meer informatie.

Die Spezifikationen unterliegen den nominalen Fertigungsschwankungen. Materialversorgungs- und/oder Fertigungsprozesse können ohne Vorankündigung zu Spezifikationsänderungen führen. Weitere Informationen finden Sie unter shawcontract.com

Fragment Colours

	TaskWorx	Ecoworx S	Comfortworx
Style number:	5T520	5T505	C039W
Collection:	Floor Architecture III	Floor Architecture III	Floor Architecture III
Product type:	Carpet tile	Carpet tile	Carpet tile

Construction

Data + Performance

Type of manufacture	Tufted 1/12" 47.2 per 10cm	Tufted 1/12" 47.2 per 10cm	Tufted 1/12" 47.2 per 10cm
Aspect	Multi-level pattern loop	Multi-level pattern loop	Multi-level pattern loop
Dye method	100% solution dyed	100% solution dyed	100% solution dyed
Dimensions	50 x 50 cm 20 tiles (5 m ²) per box	50 x 50 cm 20 tiles (5 m ²) per box	50 x 50 cm 16 tiles (4 m ²) per box
Primary backing	PET non-woven	PET non-woven	PET non-woven
Secondary backing	Taskworx® Tile 100% recycled calcium carbonate filler	Ecoworx S™ Polyolefin Plastomer	ComfortWorx® Tile Matrix Pad Layer Contains 90% Recycled Content
Pile fibre composition	Eco Solution Q100 Polyamide 6 Contains 100% Recycled Content	Eco Solution Q100™ Polyamide 6 Contains 100% Recycled Content	Eco Solution Q100 Polyamide 6 Contains 100% Recycled Content
Total thickness	5.9 mm	5.5 mm	9.5 mm
Effective Pile thickness	2.0 mm	1.7 mm	1.9 mm
Total mass	3866 g/m ²	2632 g/m ²	4346 g/m ²
Nominal total pile mass	634 g/m ²	634 g/m ²	634 g/m ²
Effective pile mass	244 g/m ²	207 g/m ²	224 g/m ²
Pile density	0.120 g/cm ³	0.118 g/cm ³	0.120 g/cm ³
Embodied Carbon (EPD Calculation A1-A3)	3.58 kg CO ₂ e/m ²	4.91 kg CO ₂ e/m ²	5.10 kg CO ₂ e/m ²
Recommended installation methods	Monolithic, Quarter turn, Ashlar, Brick, Random	Monolithic, Quarter turn, Ashlar, Brick, Random	Monolithic, Quarter turn, Ashlar, Brick, Random



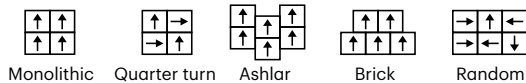
Carbon Neutral
Low Embodied Carbon



For detailed warranty information and the most accurate information on the recycle content please visit shawcontract.com
 Pour plus de détails sur les garanties et plus d'information sur le contenu recyclé rendez-vous sur shawcontract.com
 Voor meer informatie over de garantie en voor de meest recente informatie over recycling, ga naar shawcontract.com
 Detaillierte Informationen über Gewährleistungen und den genauen Recyclinganteil finden Sie unter shawcontract.com

Recommended installation methods

Méthodes d'installation conseillées | Advies tapijttegels leggen | Empfohlene Installationsmethoden



EcoWorx S	26db	0.20 aw
TaskWorx	26db	0.15 aw
ComfortWorx	37db	0.30 aw

 22 EU.DOP/2895/CPR/1222/0323/EST Oosterhout Showroom Vaartweg 10, 4905 BL Netherlands (NLD) Notified Body 2895	 22 UK.DOP/0338/CPR/1222/0323/EST Blackkaddie Road Industrial Estate, Sanquhar, DG4 6DB, UK Approved Body 0338
 EN 14041:2004/AC 2006 For use as an indoor floor covering as specified by the manufacturer	

London +44 (0) 20 7961 4120 | Paris +33 (0)1 81 22 44 39 | Dubai +971 4 584 6956 | Oosterhout +31 20 2620955

Specifications are subject to nominal manufacturing variances. Material supply and/or manufacturing processes may necessitate specification changes without notice. Visit shawcontract.com for more information.
 L'approvisionnement des matériaux et/ou les procédés de fabrication peuvent nécessiter des modifications de caractéristiques sans avertissement. Pour plus d'informations, veuillez vous rendre sur shawcontract.com
 Specificaties voor de levering van materialen en/of productieprocessen kunnen indien nodig zonder voorafgaande kennisgeving worden gewijzigd. Ga naar shawcontract.com voor meer informatie.
 Die Spezifikationen unterliegen den nominalen Fertigungsschwankungen. Materialversorgungs- und/oder Fertigungsprozesse können ohne Vorankündigung zu Spezifikationsänderungen führen. Weitere Informationen finden Sie unter shawcontract.com

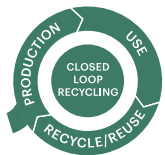
Formation

	TaskWorx	Ecoworx S	Comfortworx
Style number:	5T584	5T585	CO41W
Collection:	Floor Architecture III	Floor Architecture III	Floor Architecture III
Product type:	Carpet tile	Carpet tile	Carpet tile

Construction

Data + Performance

Type of manufacture	Tufted 1/12" 47.2 per 10cm	Tufted 1/12" 47.2 per 10cm	Tufted 1/12" 47.2 per 10cm
Aspect	Multi-level pattern loop	Multi-level pattern loop	Multi-level pattern loop
Dye method	100% solution dyed	100% solution dyed	100% solution dyed
Dimensions	50 x 50 cm 20 tiles (5 m ²) per box	50 x 50 cm 20 tiles (5 m ²) per box	50 x 50 cm 16 tiles (4 m ²) per box
Primary backing	PET non-woven	PET non-woven	PET non-woven
Secondary backing	Taskworx® Tile 100% recycled calcium carbonate filler	Ecoworx S™ Polyolefin Plastomer	ComfortWorx® Tile Matrix Pad Layer Contains 90% Recycled Content
Pile fibre composition	Eco Solution Q100 Polyamide 6 Contains 100% Recycled Content	Eco Solution Q100™ Polyamide 6 Contains 100% Recycled Content	Eco Solution Q100 Polyamide 6 Contains 100% Recycled Content
Total thickness	6.3 mm	5.4 mm	10.0 mm
Effective Pile thickness	1.9 mm	2.1 mm	2.1 mm
Total mass	4067 g/m ²	2558 g/m ²	3741 g/m ²
Nominal total pile mass	630 g/m ²	630 g/m ²	630 g/m ²
Effective pile mass	190 g/m ²	269 g/m ²	275 g/m ²
Pile density	0.100 g/cm ³	0.127 g/cm ³	0.133 g/cm ³
Embodied Carbon (EPD Calculation A1-A3)	3.58 kg CO ₂ e/m ²	4.91 kg CO ₂ e/m ²	5.10 kg CO ₂ e/m ²
Recommended installation methods	Quarter Turn, Brick, Random	Quarter Turn, Brick, Random	Quarter Turn, Brick, Random



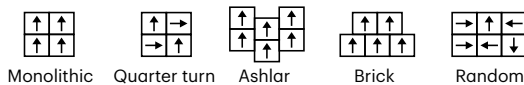
Carbon Neutral
Low Embodied Carbon



For detailed warranty information and the most accurate information on the recycle content please visit shawcontract.com
 Pour plus de détails sur les garanties et plus d'information sur le contenu recyclé rendez-vous sur shawcontract.com
 Voor meer informatie over de garantie en voor de meest recente informatie over recycling, ga naar shawcontract.com
 Detaillierte Informationen über Gewährleistungen und den genauen Recyclinganteil finden Sie unter shawcontract.com

Recommended installation methods

Méthodes d'installation conseillées | Advies tapijttegels leggen | Empfohlene Installationsmethoden



EcoWorx S	26db	0.20 aw
TaskWorx	26db	0.15 aw
ComfortWorx	37db	0.30 aw

<p>22 EU.DOP/2895/CPR/1222/0323/EST</p> <p>Oosterhout Showroom Vaartweg 10, 4905 BL Netherlands (NLD)</p> <p>Notified Body 2895</p>	<p>22 UK.DOP/0338/CPR/1222/0323/EST</p> <p>Blackadzie Road Industrial Estate, Sanquhar, DG4 6DB, UK</p> <p>Approved Body 0338</p>
<p>EN 14041:2004/AC 2006</p> <p>For use as an indoor floor covering as specified by the manufacturer</p>	

London +44 (0) 20 7961 4120 | Paris +33 (0) 1 81 22 44 39 | Dubai +971 4 584 6956 | Oosterhout +31 20 2620955

Specifications are subject to nominal manufacturing variances. Material supply and/or manufacturing processes may necessitate specification changes without notice. Visit shawcontract.com for more information.

L'approvisionnement des matériaux et/ou les procédés de fabrication peuvent nécessiter des modifications de caractéristiques sans avertissement. Pour plus d'informations, veuillez vous rendre sur shawcontract.com

Specificaties voor de levering van materialen en/of productieprocessen kunnen indien nodig zonder voorafgaande kennisgeving worden gewijzigd. Ga naar shawcontract.com voor meer informatie.

Die Spezifikationen unterliegen den nominalen Fertigungsschwankungen. Materialversorgungs- und/oder Fertigungsprozesse können ohne Vorankündigung zu Spezifikationsänderungen führen. Weitere Informationen finden Sie unter shawcontract.com

Formation Colours

	TaskWorx	Ecoworx S	Comfortworx
Style number:	5T519	5T504	C037W
Collection:	Floor Architecture III	Floor Architecture III	Floor Architecture III
Product type:	Carpet tile	Carpet tile	Carpet tile

Construction

Data + Performance

Type of manufacture	Tufted 1/12" 47.2 per 10cm	Tufted 1/12" 47.2 per 10cm	Tufted 1/12" 47.2 per 10cm
Aspect	Multi-level pattern loop	Multi-level pattern loop	Multi-level pattern loop
Dye method	100% solution dyed	100% solution dyed	100% solution dyed
Dimensions	50 x 50 cm 20 tiles (5 m ²) per box	50 x 50 cm 20 tiles (5 m ²) per box	50 x 50 cm 16 tiles (4 m ²) per box
Primary backing	PET non-woven	PET non-woven	PET non-woven
Secondary backing	Taskworx® Tile 100% recycled calcium carbonate filler	Ecoworx S™ Polyolefin Plastomer	ComfortWorx® Tile Matrix Pad Layer Contains 90% Recycled Content
Pile fibre composition	Eco Solution Q100 Polyamide 6 Contains 100% Recycled Content	Eco Solution Q100™ Polyamide 6 Contains 100% Recycled Content	Eco Solution Q100 Polyamide 6 Contains 100% Recycled Content
Total thickness	6.0 mm	5.8 mm	10.6 mm
Effective Pile thickness	1.7 mm	2.1 mm	2.0 mm
Total mass	4137 g/m ²	2736 g/m ²	4348 g/m ²
Nominal total pile mass	670 g/m ²	670 g/m ²	670 g/m ²
Effective pile mass	216 g/m ²	235 g/m ²	258 g/m ²
Pile density	0.124 g/cm ³	0.113 g/cm ³	0.123 g/cm ³
Embodied Carbon (EPD Calculation A1-A3)	3.58 kg CO ₂ e/m ²	4.91 kg CO ₂ e/m ²	5.10 kg CO ₂ e/m ²
Recommended installation methods	Quarter Turn, Brick, Random	Quarter Turn, Brick, Random	Quarter Turn, Brick, Random



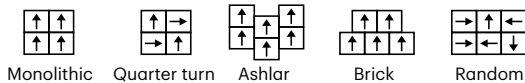
Carbon Neutral
Low Embodied Carbon



For detailed warranty information and the most accurate information on the recycle content please visit shawcontract.com
 Pour plus de détails sur les garanties et plus d'information sur le contenu recyclé rendez-vous sur shawcontract.com
 Voor meer informatie over de garantie en voor de meest recente informatie over recycling, ga naar shawcontract.com
 Detaillierte Informationen über Gewährleistungen und den genauen Recyclinganteil finden Sie unter shawcontract.com

Recommended installation methods

Méthodes d'installation conseillées | Advies tapijttegels leggen | Empfohlene Installationsmethoden



EcoWorx S	26db	0.20 aw
TaskWorx	26db	0.15 aw
ComfortWorx	37db	0.30 aw

 22 EU.DOP/2895/CPR/1222/0323/EST Oosterhout Showroom Vaartweg 10, 4905 BL Netherlands (NLD) Notified Body 2895	 22 UK.DOP/0338/CPR/1222/0323/EST Blackkaddie Road Industrial Estate, Sanquhar, DG4 6DB, UK Approved Body 0338
 EN 14041:2004/AC 2006 For use as an indoor floor covering as specified by the manufacturer	

London +44 (0) 20 7961 4120 | Paris +33 (0)1 81 22 44 39 | Dubai +971 4 584 6956 | Oosterhout +31 20 2620955

Specifications are subject to nominal manufacturing variances. Material supply and/or manufacturing processes may necessitate specification changes without notice. Visit shawcontract.com for more information.
 L'approvisionnement des matériaux et/ou les procédés de fabrication peuvent nécessiter des modifications de caractéristiques sans avertissement. Pour plus d'informations, veuillez vous rendre sur shawcontract.com
 Specificaties voor de levering van materialen en/of productieprocessen kunnen indien nodig zonder voorafgaande kennisgeving worden gewijzigd. Ga naar shawcontract.com voor meer informatie.
 Die Spezifikationen unterliegen den nominalen Fertigungsschwankungen. Materialversorgungs- und/oder Fertigungsprozesse können ohne Vorankündigung zu Spezifikationsänderungen führen. Weitere Informationen finden Sie unter shawcontract.com



ShawContract®

London +44 (0) 20 7961 4120 | Paris +33 (0)1 81 22 44 39 | Dubai +971 4 584 6956 | Oosterhout +31 20 2620955
UK: infouk@shawcontract.com | France: infofr@shawcontract.com | Middle East/Africa: infomea@shawcontract.com | Netherlands: infonl@shawcontract.com

Corporate Headquarters +1 800 257 7429 | +1 706 532 7984 | Atlanta +1 404 853 7429 | Bangalore +080 6773 0202 | Beijing +86 10 6568 5881
Chicago +1 312 467 1331 | Hong Kong +852 2623 0371 | Latin America (Miami) +1 305 827 5912 | Los Angeles +1 800 233 1614 | Melbourne +61 3 9939 8543
Mexico City +55 5010 7600 | Nantong +86 400 800 7429 | New York +1 212 953 7429 | San Francisco +1 415 955 1920 | Santiago +562 2431 5000 x 550
São Paulo +55 11 3071 1702 | Shanghai +86 21 3338 4000 | Singapore +65 6733 1811 | Sydney +61 2 8065 1901

shawcontract.com

COVER: FRAGMENT MARBLE INSTALLED MONOLITHIC